

Hot tub maintenance

We use bromine tablets dispensed in the floating dispenser.



You will need to check bromine levels each time you come to the property.
Use the supplied testing sticks for this.
You will need to check the ph too.

Bromine Tablets

These Bromine Tablets are ideal for daily dosing of your swimming pool or spa, to produce free active bromine which kills bacteria and other potentially harmful organisms.

Application Instructions

1. These tablets are designed for use with bromine feeders and floating dispensers.
2. When feeder device requires refilling with tablets always follow manufacturer's instructions.
3. Ensure tablets used in the feeder are of the same chemical (Bromo-Chloro-Dimethyl Hydantoin). If other materials have been used previously, wash out feeder thoroughly before adding tablets.
4. Adjust feeder to ensure a constant bromine residual is present in the pool or spa.
5. Check bromine levels regularly with a Test Kit and maintain a bromine residual of 2 - 4mg/l (ppm) for domestic pools, 3 - 5mg/l (ppm) for domestic spas and 4 - 6mg/l (ppm) for commercial spas.
6. Check pH value regularly with a Test Kit and maintain levels between 7.2 - 7.6.

General Precautions

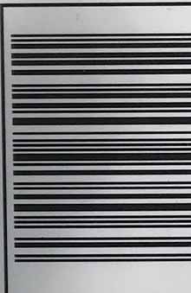
Dosing

- Never mix with other chemicals including household cleaners as a dangerous reaction may occur.

Handling/Storage - Important

– see hazards and precautionary statements below.

- Handle products in a well-ventilated area – preferably outdoors.
- Wash hands after use.
- Ensure chemicals do not become damp in storage
- store in a cool, dry place.



BROMINE TABLETS CONTAIN BROMO-CHLORO-5, 5-DIMETHYLIMIDAZOLIDINE-2,4-DIONE

Danger
Harmful if swallowed. Contact with acids liberates toxic gas.
Causes skin irritation. Causes serious eye irritation. May cause respiratory irritation.

UN 308
EC No. 251-1

Every 2-4 weeks , depending on use, you will need to change the filter.

Replacing the filter

Every 2-4 weeks , depending on use, you will need to change the filter.

TURN OFF hot tub



1. turn off all 4 pipes valves (turn lever against flow to turn off) that run from power plant to hot tub



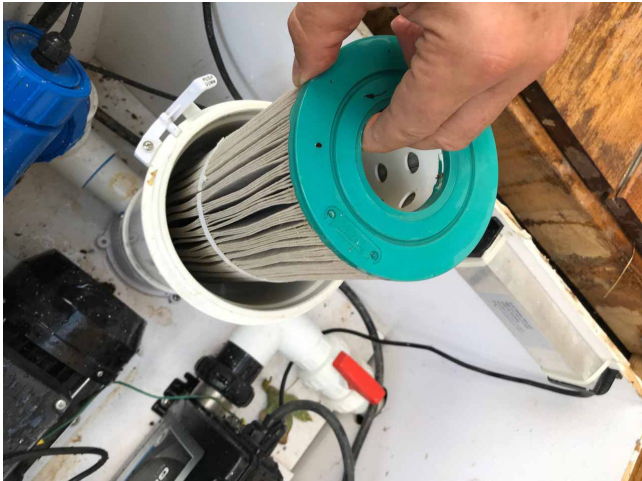
2. Open 1x pipe valve inside power plant box(turn red lever in line with flow to



turn on.) You will hear water draining out of filter holder.

Unscrew the black screw top, then gently release the lid, this has an O ring on it. Lift out filter and replace with clean one.





Replace the lid and carefully apply downward pressure ensuring that the lid is properly sealed. Apply black screw lid. If it is not properly sealed you will notice it is dribbling once the water is again introduced into the filter chamber.

Open small black valve on top,



this will hiss as the water comes in and then when water comes out of it, tighten and close. This prevents air being stuck in system.

To re-commission filter

1. Close single pipe valve in box



Open all 4 pipes outside box.



You will hear it all Kick into action.

Turn the hot tub back on. The system takes a few minutes to prime itself. When it is up and running it displays the current temperature.

Sometimes after refilling or changing filter it can get an air block. This will show up on the panel as a sequence of letters. You will need to carefully loosen this large white nut (see image below), you will hear water release, close again when you see water come out.



CLEANING THE FILTER

Mix immerse solution in tub in wash room, cover with water and leave for a day or 2, could be a week. I have 3 filters so you will have enough. Fasten the lid and leave in garage.



To heat hot tub:

We use 3 modes;

1. Standard, this is used when the client is present.
2. Sleep, to be used between clients, it is **IMPORTANT** to put into SLEEP as it is very **EXPENSIVE** to leave it in standard mode.
3. This is to empty out the tub. I do this if I know it will not be used for a while. You **MUST** leave about 12 inches or so of water in the bottom...and leave the bromine dispenser in there. Please refer to my notes on emptying the tub.

Set the hot tub to standard mode:

To do this press the mode button



Press it until the standard mode flashes up, leave it to set, then press warm to move temperature to 36-38. This setting will keep the tub at a constant temperature ..



When the house is not occupied reset to Sleep mode. To do this go to mode and reset to sleep, then drop temperature to minimum setting which is 26.



Set To sleep between clients, when in sleep mode ALWAYS reset temperature to minimum temperature which is 26, this will have the tub run at around 15.

After clients have left please check for debris, use the vacuum to suck up

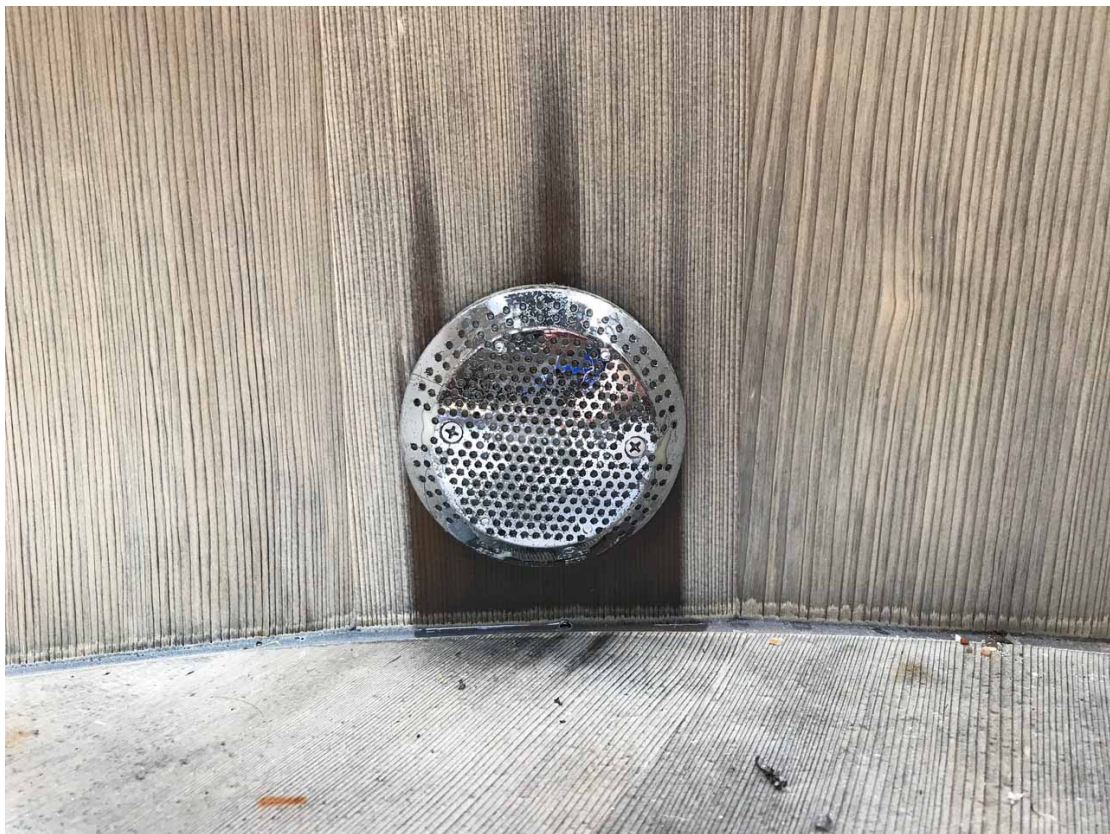
residue on the bottom and top the tub if necessary.
General Maintenance.

Every couple of months the water will need to be changed.



Switch off the tub 1st

Use the pump in the wash room to empty the tub. Empty out completely and mop out what you cant remove with pump, then clean the filter inlets, there are 4, they get hair stuck on them.



[It maybe necessary to do this clean these inlets every couple of weeks if the house is booked often, you will have to jump in and clean them by hand.!]
}When the tub is empty is a good time to change the filter. Once empty you can just take it out and replace before refilling. Refill and loosen the small black valve on top of the filter holder.
Once full switch on and wait for it to prime itself.

Ever couple of months we need to check that the UV light filter is working. To check UV filter is working open box at night and look at filter and see if you can see any light coming from it. It is the tube with 2 blue ends , see below.

