

**User  
Manual**

**Washer-  
dryer**



ZKI 225

## Thank you for selecting our appliance

We wish you lots of enjoyment with your new appliance and we hope that you will consider our brand again when purchasing household appliances. Please read this user manual carefully and keep it throughout the product life cycle as a reference document. The user manual should be passed on to any future owner of the appliance.

The following symbols are used in this manual:



Important information concerning your personal safety and information on how to avoid damaging the appliance.



General information and tips



Environmental information

## Content

---

Safety information	-----3	Washing only	-----14
Description of the appliance	-----5	Drying only and autodrying	-----17
Detergent dispenser drawer	-----5	Drying time table	-----18
Control panel - functions	-----6-7	Care and cleaning	-----19
Programme table	-----10	What to do if...	-----21
Washing hints	-----11	Technical data	-----24
Drying hints	-----13	Consumption values	-----25
Before the first use	-----14	Installation instruction	-----29
Operating sequence	-----14	Environmental concerns	-----31

## Safety information

In the interest of your safety and to ensure the correct use, before installing and first using the appliance, read this user manual carefully, including its hints and warnings. To avoid unnecessary mistakes and accidents, it is important to ensure that all people using the appliance are thoroughly familiar with its operation and safety features. Save these instructions and make sure that they remain with the appliance if it is moved or sold, so that everyone using it through its life will be properly informed on appliance use and safety.

### General safety

- It is dangerous to alter the specifications or attempt to modify this product in any way.
- During high temperature washing and drying programmes the door glass may get hot. Do not touch it!
- Make sure that small pets do not climb into the drum. To avoid this, please check into the drum before using.
- Any objects such as coins, safety pins, nails, screws, stones or any other hard, sharp material can cause extensive damage and must not be placed into the machine.
- Only use the advised quantities of fabric softener and detergent. Damage to the fabric can ensue if you over-fill. Refer to the manufacturer's recommendations of quantities.
- Wash small items such as socks, laces, washable belts etc in a washing bag or pillow case as it is possible for such items to slip down between the tub and the inner drum.
- Do not use your washer-dryer to wash articles with whalebones, material without hems or torn material.
- Always unplug the appliance and turn off the water supply after use, clean and maintenance.
- Under no circumstances should you attempt to repair the machine yourself. Repairs carried out by inexperienced persons may cause injury or serious malfunctioning. Contact your local Service Centre. Always insist on genuine spare parts.

### Installation

- This appliance is heavy. Care should be taken when moving it.
- When unpacking the appliance, check that it is not damaged. If in doubt, do not use it and contact the Service Centre.
- All packing and transit bolts must be removed before use. Serious damage can occur to the product and to property if this is not adhered to. See relevant section in the user manual.
- After having installed the appliance, check that it is not standing on the inlet and drain hose and the worktop is not pressing the electrical supply cable.
- If the machine is situated on a carpeted floor, please adjust the feet in order to allow air to circulate freely.
- Always be sure, that there is no water leakage from hoses and their connections after the installation.
- If the appliance is installed in a location subject to frost, please read the «**dangers of freezing**» chapter.
- Any plumbing work required to install this appliance should be carried out by a qualified plumber or competent person.
- Any electrical work required to install this appliance should be carried out by a qualified electrician or competent person.

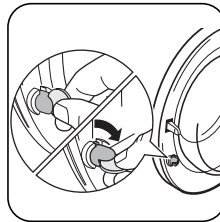
## Use

- This appliance is designed for domestic use. It must not be used for purposes other than those for which it was designed.
- Only wash and dry fabrics which are designed to be machine washed and dried. Follow the instructions on each garment label.
- Do not overload the appliance. See the relevant section in the user manual.
- Before washing, ensure that all pockets are empty and buttons and zips are fastened. Avoid washing frayed or torn articles and treat stains such as paint, ink, rust, and grass before washing. Underwired bras must NOT be machine washed.
- Garments which have been in contact with volatile petroleum products should not be machine washed. If volatile cleaning fluids are used, care should be taken to ensure that the fluid is removed from the garment before placing in the machine.
- As some duvets and eiderdowns should be washed/dried in large commercial machines because of their bulk, please check with the manufacturer of the item before washing in a domestic machine.
- The users should always check that they have not left their gas lighters (disposable or otherwise) in their clothing.
- Never dry items that have had contact with chemicals such as dry cleaning fluid. These are of a volatile nature and could cause an explosion.
- Only tumble dry items which have been washed in water or require airing.
- Plastic detergent dispensers should not remain in the drum during the drying cycle, as the plastic used is not designed to withstand the heat. If you wish to wash-through-to-dry you should use the conventional detergent dispenser drawer.

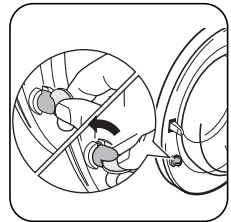
- Never pull the power supply cable to remove the plug from the socket; always take hold of the plug itself.
- Never use the washer-dryer if the power supply cable, the control panel, the working surface or the base are damaged so that the inside of the washer-dryer is accessible.

## Child safety

- This appliance is not intended for use by person (including children) with reduced physical sensory or mental capabilities or lack of experience and knowledge unless they have been given supervision or instruction concerning use of the appliance by a person responsible for their safety.
- The packaging components (e.g. plastic film, polystyrene) can be dangerous to children - danger of suffocation! Keep them out of children's reach
- Keep all detergents in a safe place out of children's reach.
- Make sure that children or pets do not climb into the drum. To prevent children and pets becoming trapped inside, the machine incorporates a special feature.



To **activate** this device, rotate the button (without pressing it) inside the door clockwise until the groove is horizontal. If necessary use a coin.

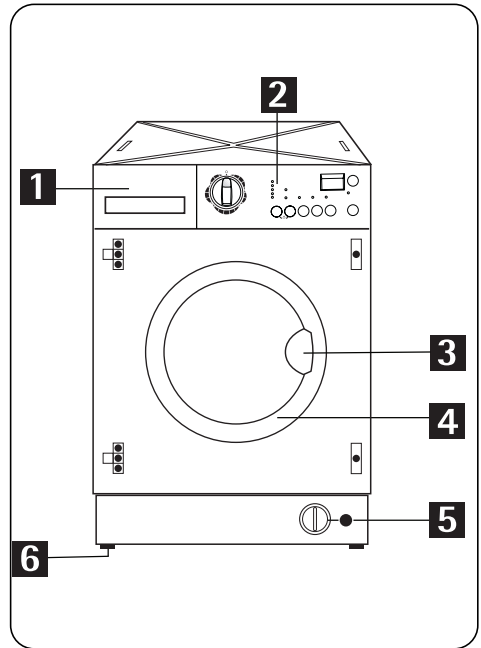


To **disable** this device and restore the possibility of closing the door, rotate the button anti-clockwise until the groove is vertical.

## Description of the appliance

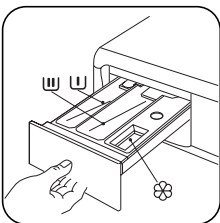
---

- 1** Detergent dispenser drawer
- 2** Control panel
- 3** Door opening handle
- 4** Rating plate
- 5** Drain pump
- 6** Adjustable feet



## Detergent dispenser drawer

---

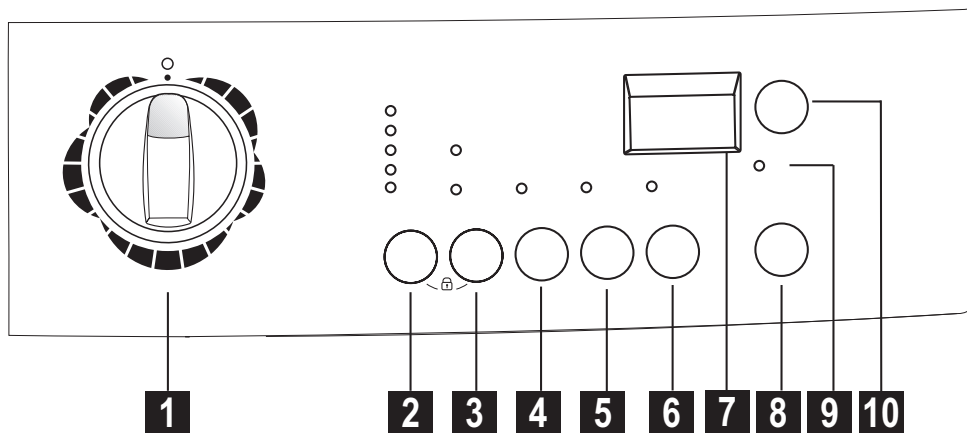


 Prewash

 Wash

 Fabric Softener

# Control panel



## **i** Information

The control panel is illustrated above. It shows the programme selector dial as well as the different buttons, the pilot light(s) and the display. These are represented by relevant numbers which are explained in the table below.

### Symbols:

= Rinses, = Drain, = Spin, = Rinse Hold, = Economy, = Super Quick,  
 = Door locked, = Child Safety Lock

<b>1</b>	<b>Programme selector dial and On/Off switch</b>	<ul style="list-style-type: none"> <li>The programme selector dial allows to select a programme and/or to switch the machine on/off «O». It can be turned either clockwise or anticlockwise.</li> </ul>
<b>2</b>	<b>Spin reduction button and Rinse Hold option</b>	<ul style="list-style-type: none"> <li>Press this button repeatedly to change the spin speed, if you want your laundry to be spun at a speed different from the one proposed by the washer-dryer or to select «Rinse Hold» option. The relevant light will light up.</li> </ul>
<b>3</b>	<b>Option button: Economy - Super Quick</b>	<ul style="list-style-type: none"> <li>By pressing this button, you can select only one of the following options: ECONOMY or SUPER QUICK. The relevant light will light up.</li> </ul>
<b>4</b>	<b>Extra Rinse button</b>	<ul style="list-style-type: none"> <li>By pressing this button, the machine performs some additional rinses. The corresponding pilot light illuminates.</li> </ul>
<b>5</b>	<b>Drying Time button</b>	<ul style="list-style-type: none"> <li>By pressing this button you can select a timed drying programme for cotton or synthetics, the relevant phase light illuminates.</li> </ul>

<b>6 Easy Iron button</b>	<ul style="list-style-type: none"> <li>• Selecting this option the laundry is gently washed and spun to avoid any creasing. In this way ironing is easier. Furthermore the machine will perform additional rinses.</li> </ul>
<b>7 Display</b>	<ul style="list-style-type: none"> <li>• The display shows the following information: duration of the selected programme, selected drying time, delayed start, incorrect option selection, child safety lock, alarm codes and end of programme.</li> </ul>
<b>8 Start/Pause button</b>	<ul style="list-style-type: none"> <li>• This button allows you to start the selected programme; the corresponding green pilot light stops flashing.</li> <li>• This button interrupts also a programme which is running, the corresponding green pilot light starts to flash.</li> </ul>
<b>9 Door pilot light</b>	<ul style="list-style-type: none"> <li>• This light illuminates when the appliance starts working and indicates that the door is locked.</li> </ul>
<b>10 Delay button</b>	<ul style="list-style-type: none"> <li>• By pressing this button, the wash programme can be delayed from 30 min - 60 min - 90 min, 2 hours and then by 1 hour up to a maximum of 20 hours. The delay value appears on the display.</li> </ul>

## Functions

### Rinse hold (Button 2)

By selecting this option the water of the last rinse is not emptied out to prevent the fabrics from creasing. When the programme has finished, the door is locked to indicate that the water must be empty out. To empty out the water, please read the chapter «At the end of the programme».

### Economy (Button 3)

Only for cottons and synthetics items lightly or normally soiled at a temperature of 40°C or higher. The washing time will be prolonged and the washing temperature will be reduced.

### Super Quick (Button 3)

Short cycle for lightly soiled items or for laundry which needs only freshening up. We recommend that you reduce the fabrics loading.

### Extra Rinse (Button 4)

The machine performs some additional rinses during the washing cycle. This option is

recommended for people who are allergic to detergents, and in areas where the water is very soft.

### Time drying (Button 5)

By pressing this button you can select a timed programme for cotton or synthetics. The relevant light illuminates. For **Cottons** you can select a drying time from 10 minutes to 250 minutes (4.10). For **Synthetics** you can select a drying time from 10 minutes to 130 minutes (2.10).

### Easy Iron (Button 6)

Selecting this option the laundry is gently washed and spun to avoid any creasing. In this way ironing is easier. Furthermore the machine will perform some additional rinses depending on the fabrics.

## Door pilot light (9)

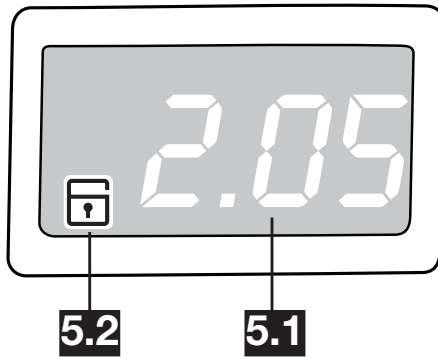
After having pressed the button **8**, the light **9** illuminates and stays on. This light indicates when the door can be opened:

- **light on**: the door is locked and **cannot** be opened. The washing or drying cycle begins.
- **light off**: the door can be opened. The drying or washing programme has finished.

If there is water left in the tub, the light **9** remains lit. The door will be still locked and it will be necessary to empty out before opening the door.

- **light blinking**: the door is opening in a few minutes.

## Display(7)



### 5.1 Duration of the selected programme /

After selecting a programme the **duration of the selected programme** appears on the display in hours and minutes.

During the programme, the time remaining is updated every minute. After having pressed button **8** and started the cycle, the light **9** illuminates and stays on.

### /Selected Drying time

After selecting a drying programme the drying time is shown in minutes or hours and minutes. After the programme has started, the time remaining is updated every minute.

### /Delayed start

The **Delayed start** appears on the display for a few seconds, then the duration of the previously selected programme is displayed. The delay time value decreases by one unit

every hour and then, when 1 hour remain, every minute.

### /Incorrect option selection

The **incorrect option selection** is indicated by the message **Err** displayed for a few seconds and by flashing of the red button light **8**.

### /Alarme codes

In the event of operating problems, some **alarm codes** can be displayed, (see paragraph "What to do if")

### /End of programme

The **End of programme** or the stop with water left in the tub is indicated by a flashing zero «0».

### 5.2 Child safety lock

This device permits you to leave the appliance unattended during its functioning.



## Programme table

Programme/ Temperature	Type of laundry	Options	Description of programme
<b>COTTON</b> 90° - 60	<b>White cotton</b> (heavily or normally soiled cotton items)	Spin Red. / Rinse Hold, Super Quick(**), Economy, Easy Iron, Extra Rinse	Main wash, Rinses, Long spin at the max speed - 1200 rpm Max load: 6 Kg Load reduced: 3 Kg
<b>COTTON</b> 60° - 40° - 30° - Cold	<b>White and fast colours cotton</b> (normally soiled cotton items)	Spin Red. / Rinse Hold, Super Quick(**), Economy(*), Easy Iron, Extra Rinse	Main wash, Rinses, Long spin at the max speed - 1200 rpm Max load: 6 Kg Load reduced: 3 Kg
<b>COTTON</b> 90°+ PREWASH	<b>White cotton</b> (heavily soiled items)	Spin Red. / Rinse Hold, Super Quick(**), Economy, Easy Iron, Extra Rinse	Prewash, main wash, Rinses, Long spin at 1200 rpm, Max load: 6 Kg Load reduced: 3 Kg
<b>COTTON</b> 60°+ PREWASH	<b>White and fast colours cotton</b> (heavily soiled items)	Spin Red. / Rinse Hold, Super Quick(**), Economy(*), Easy Iron, Extra Rinse	Prewash, main wash, Rinses, Long spin at 1200 rpm, Max load: 6 Kg Load reduced: 3 Kg
<b>COTTON</b> 40°+ PREWASH	<b>Colour cotton</b> (heavily soiled items)	Spin Red. / Rinse Hold, Super Quick(**), Economy(*), Easy Iron, Extra Rinse	Prewash, main wash, Rinses, Long spin at 1200 rpm, Max load: 6 Kg Load reduced: 3 Kg
<b>SYNTHETICS</b> 60° - 40° - 30° - Cold	<b>Synthetic or mixed fabrics</b> (normally soiled cotton items)	Spin Red. / Rinse Hold, Super Quick(**), Economy(*), Easy Iron, Extra Rinse	Main wash, Rinses, Short spin at 900 rpm Max load: 3 Kg Load reduced: 1,5 Kg
<b>DELICATES</b> 40° - 30° - Cold	<b>Delicate items</b> (normally soiled cotton items)	Spin Red. / Rinse Hold, Super Quick(**), Extra Rinse	Main wash, rinses, Short spin at 700 rpm Max load: 3 Kg Load reduced: 1,5 Kg

(\*) This option is not active at a temperature lower than 40°C.

(\*\*) If you select the SUPER QUICK option by pressing button **3**, we recommend you to reduce the maximum load as indicated in the table above. Full loading is possible however with somewhat reduced cleaning results.

## Programme table

Programme/ Temperature	Type of laundry	Options	Description of programme
<b>JEANS</b> 40°	Special programme for free time items as denim, pants, shirts or jackets in Jeans and also jersey made of hi-tech materials. Some extra rinses will be carried out by the machine.	Spin Red. / Rinse Hold, Easy Iron	Main wash, Rinses, long spin at 1200 rpm Max load: 3 Kg
<b>HANDWASH</b> 40° - 30° - Cold	Special programme for hand washed fabrics. <b>Note:</b> A single or bulky item may cause imbalance. If the appliance doesn't perform the final spin phase, add more items, redistribute the load manually and then select the spinning programme.	Spin Red. / Rinse Hold	Main wash, rinses, Short spin at 900 rpm Max load: 2 Kg
<b>RINSES</b>	Separate rinses cycle with softener, if needed, for hand washed cotton items The machine performs 3 rinses, followed by a final spin at maximum speed. The spin speed can be reduced by pressing the relevant button.	Spin Red./ Rinse Hold, Easy Iron, Extra Rinse	Rinses, long spin at 1200 rpm Max load: 6 Kg
<b>DRAIN</b>	For emptying out the water in programmes which stop with water in the tub		Draining of water
<b>SPIN</b>	Long spin at max speed for handwashed cotton items or for emptying out the water in the tub	Spin Red.	Drain and long spin at 1200 rpm Max load: 6 Kg
○ = Cancelling / Switching off the machine	To interrupt a running programme, to cancel an incorrect option selection or to switch the machine off.		

## Washing hints

### Sorting the laundry

Follow the wash code symbols on each garment label and the manufacturer's washing instructions. Sort the laundry as follows: whites, coloureds, synthetics, delicates, woollens.

### Temperatures

90° or 95°	for normally soiled white cottons and linen (e.g. tea cloths, towels, tablecloths, sheets...)
50°/60°	for normally soiled, colour fast garments (e.g. shirts, night dresses, pyjamas....) in linen, cotton or synthetic fibres and for lightly soiled white cotton (e.g. underwear).
cold - 30°-40°	for delicate items (e.g. net curtains), mixed laundry including synthetic fibres and woollens bearing the label «pure new wool, machine washable, non-shrink».

### Before loading the laundry

**Washing:** Never wash whites and coloureds together. Whites may lose their «whiteness» in the wash.

New coloured items may run in the first wash; they should therefore be washed separately the first time.

**Make sure that no metal objects are left in the laundry (e.g. hair clips, safety pins, pins). Button up pillowcases, close zip fasteners, hooks and poppers. Tie any belts or long tapes.**

Remove persistent stains before washing. Rub particularly soiled areas with a special detergent or detergent paste.

Treat curtains with special care. Remove hooks or tie them up in a bag or net.

### Maximum loads

Recommended loads are indicated in the programme charts. General rules:

**Cotton, linen:** drum full but not too tightly packed;

**Synthetics:** drum no more than half full;

**Delicate fabrics and woollens:** drum no more than one third full.

Washing a maximum load makes the most efficient use of water and energy.

For heavily soiled laundry, reduce the load size.

### Laundry weights

The following weights are indicative:

bathrobe	1200 g
napkin	100 g
quilt cover	700 g
sheet	500 g
pillow case	200 g
tablecloth	250 g
towelling towel	200 g
tea cloth	100 g
night dress	200 g
ladies' briefs	100 g
man's work shirt	600 g
man's shirt	200 g
man's pyjamas	500 g
blouse	100 g
men's underpants	100 g

### Removing stains

Stubborn stains may not be removed by just water and detergent. It is therefore advisable to treat them prior to washing.

**Blood:** treat fresh stains with cold water. For dried stains, soak overnight in water with a special detergent then rub in the soap and water.

**Oil based paint:** moisten with benzine stain remover, lay the garment on a soft cloth and dab the stain; treat several times.

**Dried grease stains:** moisten with turpentine, lay the garment on a soft surface and dab the stain with the fingertips and a cotton cloth.

**Rust:** oxalic acid dissolved in hot water or a rust removing product used cold. Be careful with rust stains which are not recent since the cellulose structure will already have been damaged and the fabric tends to hole.

**Mould stains:** treat with bleach, rinse well (whites and fast coloureds only).

**Grass:** soap lightly and treat with bleach (whites and fast coloureds only).

**Ball point pen and glue:** moisten with acetone (\*), lay the garment on a soft cloth and dab the stain.

**Lipstick:** moisten with acetone as above, then treat stains with methylated spirits. Remove any residual marks from white fabrics with bleach.

**Red wine:** soak in water and detergent, rinse and treat with acetic or citric acid, then rinse. Treat any residual marks with bleach.

**Ink:** depending on the type of ink, moisten the fabric first with acetone (\*), then with acetic acid; treat any residual marks on white fabrics with bleach and then rinse thoroughly.

**Tar stains:** first treat with stain remover, methylated spirits or benzine, then rub with detergent paste.

(\*) do not use acetone on artificial silk.

## Detergents and additives

Good washing results also depend on the choice of detergent and use of the correct quantities to avoid waste and protect the environment. Although biodegradable, detergents contain substances which, in large quantities, can upset the delicate balance of nature.

The choice of detergent will depend on the type of fabric (delicates, woollens, cottons, etc.), the colour, washing temperature and degree of soiling.


All commonly available washing machine detergents may be used in this appliance:


- powder detergents for all types of fabric,
- powder detergents for delicate fabrics (60°C max) and woollens,
- liquid detergents, preferably for low temperature wash programmes (60°C max) for all types of fabric, or special for woollens only.

The detergent and any additives must be placed in the appropriate compartments of the dispenser drawer before starting the wash programme.

If using or liquid detergents, a programme **without** prewash must be selected.

The washer-dryer incorporates a recirculation system which allows an optimal use of the concentrated detergent.

Pour liquid detergent into the dispenser drawer compartment marked  **just before** starting the programme.

Any fabric softener or starching additives must be poured into the compartment marked  before starting the wash programme.

Follow the product manufacturer's recommendations on quantities to use and **do not exceed the «MAX» mark in the detergent dispenser drawer.**

## Quantity of detergent to be used

The type and quantity of detergent will depend on the type of fabric, load size, degree of soiling and hardness of the water used.

Water hardness is classified in so-called «degrees» of hardness. Information on hardness of the water in your area can be obtained from the relevant water supply company, or from your local authority.

Follow the product manufacturers' instructions on quantities to use.

## Degrees of water hardness

Follow the product manufacturers' instructions on quantities to use.

Use less detergent if:

- you are washing a small load,
- the laundry is lightly soiled,
- large amounts of foam form during washing.

Level	Characteristic	Degrees	
		German °dH	French °T.H.
1	soft	0-7	0-15
2	medium	8-14	16-25
3	hard	15-21	26-37
4	very hard	> 21	> 37

## Drying hints

As a dryer, the machine works on the condensation principle.

**Therefore, the water tap must be open and the drain hose must drain water into a sink or into the drain pipe, even during the drying cycle.**

**Attention!** Before starting the drying programme, reduce the loads of washed laundry, in order to obtain good performances.

### Laundry not suitable for drying

- Particularly delicate items such as synthetic curtains, woollen and silk, garments with metal inserts, nylon stockings, bulky garments such as anoraks, bedcovers, quilts, sleeping bags and duvets must not be machine dried.
- Avoid drying dark clothes with light coloured fluffy items such as towels as these can attract the fluff.
- Remove the laundry when the appliance has finished drying.
- To avoid a static charge when drying is completed, use either a fabric softener when you are washing the laundry or a fabric conditioner specifically for tumble dryers.
- Garments padded with foam-rubber or materials similar to foam-rubber must not be machine dried; they represent a fire hazard.
- Also, fabrics containing residues of setting lotions or hair sprays, nail solvents or similar solutions must not be machine dried in order

to avoid the formation of harmful vapours.

### Gargment's labels

For drying, follow the indications given on the manufacturer's labels:

- May be tumble dried
- Drying at high temperature
- Drying at reduced temperature
- Do not tumble dry.

### Drying cycle duration

The drying time may vary depending on:

- speed of the final spin
- dryness degree required (iron dry, store dry)
- type of laundry
- wheight of the load size

The average drying time for a timed drying are indicated in the «Drying Time» chapter. The experience will help you to dry your laundry in a more suitable way, according to the different fabrics. Take note of the duration drying time of the already performed cycles.

### Additional drying

If the laundry is till dump at the end of the drying programme, select again a short drying.

**Attention! Do not over dry the laundry in order to avoid creasing of fabrics or garment's shrinking .**

## Before the first use

### **WARNING!**

Ensure that the electrical and water connections comply with the installation instructions.

### **IMPORTANT!**

Remove the polystyrene block and any material from the drum.

### **IMPORTANT!**

Before the first wash we recommend that you pour 2 liters of water to activate the ECO valve. Then run a cotton cycle at the 90°C, without any laundry in the machine, to remove any manufacturing residue from the drum and tub. Pour 1/2 a measure of detergent into the main compartment of the dispenser drawer and start the machine.

### **Acoustic signals**

The machine is provided of an acoustic device, which sounds in the following cases:


- at the end of the cycle
- in the event of operating problems

By pressing the buttons **4** and **5** simultaneously for about 6 seconds, the acoustic signal is deactivated (except for the events of operating problems). By pressing these 2 buttons again, the the acoustic signal is reactivated.

### **Child safety lock**

This device permits you to leave the appliance unattended during its functioning, so avoiding that children might accidentally start the machine or modify a running programme.

This function remains able also when the washer-dryer is not working.

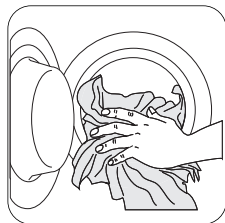
To enable (disable) this option press simultaneously for about 6 seconds buttons **2** and **3** buttons until the icon  appears (disappears) on (from) the display.

There are two different ways to set this option:

- before pressing the button **8**:  
it will be impossible to start the machine.
- after pressing the button **8**:  
it will be impossible to change any other programme or option.

## Operating sequence

### **Washing only**

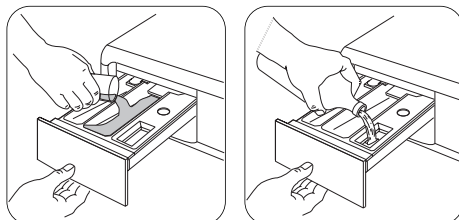


#### **1. Load the laundry**

Open the door by carefully pulling the door handle outwards. Place the laundry in the drum, one item at a time, shaking them out as much as

possible. Close the door.

### **Measure out the detergent and the fabric softener**



Pull out the dispenser drawer until it stops. Measure out the amount of detergent required,

pour it into the main wash compartment **III** and, if you wish to carry out a programme with the prewash phase, pour it into the compartment marked **II**.

If required, pour fabric softener into the compartment marked **☼** (the amount used must not exceed the «MAX» mark in the drawer). Close the drawer gently.

### Select the required programme by means of the programme selector dial (1)

Turn the programme selector dial to the required programme. The green light of button **8** starts to flash. It can be turned either clockwise or anticlockwise.

On position «O» the programme is reset and the machine is switched OFF.

**At the end of the programme the selector dial must be turned to position «O», to switch the machine off.**



### **ATTENTION!**

If you turn the programme selector dial to another programme when the machine is working, the **red** pilot light of button **8** will flash 3 times and the message **Err** is displayed on the display to indicate a wrong selection. The machine will not perform the new selected programme.

### Select the spin speed or the Rinse Hold option by pressing button 2

When selecting a programme, the light corresponding to the maximum speed allowed for that programme will illuminate. The light corresponding to your selection will light up.

### Select the desired option by pressing buttons 3, 4 and 6

Depending on the programme, different functions can be combined. These must be selected after choosing the desired programme and before depressing the button **8**.

For the compatibility of the options with the washing programmes, refer to the section «Programmes table».

### Select the delayed start by pressing the button 10

Press this button to select the required delay. The selected delay time value will appear on the display for a few seconds, then the duration of the programme will appear again.

You must select this option after you have set the programme and before you press the button **8**.

You can cancel the delay time at any moment, before you press button **8**. If you have already pressed it, and you wish to cancel the delay time, proceed as follows:

- set the washing-dryer to PAUSE by pressing button **8**;
- press the button **10** once. On the display will appear the symbol «D'».
- press button **8** again to start the programme.

### **IMPORTANT!**

The selected delay can be modified only after you have turned the programme selector dial to the «O» position and after you have selected the programme again.

### **Note!**

The Delay Start cannot be selected with «Drain» programme.

### Start the programme by pressing button 8

To start the selected programme, press this button; the corresponding green pilot light stops flashing.

The pilot light **9** illuminates to indicate that the appliance starts operating and the door is locked. If a delayed start has been selected, the display shows the countdown.

**IMPORTANT!** If an option which is not compatible with the set wash programme is

selected, the message **Err** is displayed for a few seconds and the **red** light of this button flashes for 3 times.

### **Altering an option or a running programme**

It is possible to change some option before the programme carries it out.

Before you make any change, you must pause the washer-dryer by pressing button **8**.

Changing a running programme is possible only by resetting it. Turn the programme selector dial to «O» and then to the new programme position. Start the new programme by pressing button **8** again.

The washing water in the tub will not empty out.

### **Interrupting a programme**

Press button **8** to interrupt a programme which is running, the corresponding light starts to flash. Press the button again to restart the programme.

### **Cancelling a programme**

Turn the selector dial to «O» to cancel a programme which is running. Now you can select a new programme.

### **Opening the door after the programme has started**

When the machine is working and throughout the delay time the door will be locked. If you need to open the door, you must first set the washer-dryer to PAUSE by pressing button **8**. If the light **9** goes off the door can be opened. If the light **9** remains lit, this means that the machine is already heating or that the water level is too high (do not force the door!).

If you cannot open the door but you need to open it you have to switch the machine off by turning the selector dial to «O». After a few minutes the door can be opened (**Pay attention to the water level and temperature!**).

After this procedure, it will be necessary to set the programme and the options again and then to depress button **8**.

### **At the end of the programme**

The machine stops automatically. Some acoustic signals sound and on the display will appear a flashing «D». The light of button **8** and the light **9** go off. The door can be opened.

If at the end of a programme there is water in the tub, the light **9** remains on. The door is locked to indicate that the door must be empty out.

### **To empty out the water follow the following instructions:**

1. turn the programme selector dial to «O»
2. select the draining or spinning programme
3. reduce the spin speed, if needed, by pressing the button **2**
4. press button **8** to start the programme
5. at the end of programme, the display shows a flashing zero «D», the light **9** goes off and it will be possible to open the door.

At the end of the cycle, turn the programme selector dial to «O» to switch the machine off. Remove the laundry from the drum and carefully check that the drum is empty. If you do not intend to carry out another wash, close the water tap.

Leave the door open to prevent the formation of mildew and unpleasant smells.

### **«Stand by»**

If your laundry is not removed within 10 minutes after the programme is finished, the backlight of the display switches off and the energy saving system will be enabled.

Only the button **8** pilot light is blinking to indicate that the appliance has to be switched off. By pressing any button the appliance will come out from the energy saving status and you could set another washing programme or switch off the appliance.



## Drying only and autodrying (NON-STOP programme)

### Drying only

The recommended load to dry in your washer-dryer is 3 kg for cottons and 2 kg for synthetics.

**Note! It is possible also to dry up to 4 kg of cotton items (see the drying time table).**

The water tap must be open and the drain hose must be positioned in the sink or connected to the drain pipe.

1. Load the laundry.
2. Turn the selector dial to «Cotton» or «Synthetics» programme in the «Drying» sector.
3. Select the duration of the cycle drying by pressing repeatedly the button **5** until the time you want appears on the display (see the drying times).  
Every time you press this button the drying time increases by 5 mins.

**Note!** The programme time will automatically increase by up to 2 minutes. This is quite normal.

4. Press button **8** to start the programme. After the programme has started, the time remaining is updated every minute.
5. At the end of the programme, the buzzer sounds. A flashing zero «0» will appear on the display.  
At this point, begins the anti-crease phase which lasts for about 10 minutes. During this time the light **9** is alight, the door cannot be opened and the display keeps showing three flashing zeros «0».

At the end of this phase, the pilot light **9** goes off and the door can be opened.

**Attention!** if you wish to open the door before the anti-crease phase or to interrupt it, press any key or turn the programme selector dial to any programme position

(except «O»). The door can be opened in a few minutes.

6. Turn the selector dial to the «O» position to switch the machine off. Remove the laundry.

### Autodrying

For NON-STOP programmes, the recommended load size is 3 kg for cotton and 2 kg for synthetics. **Note! It is possible also to dry up to 4 kg of cotton items (see the drying time table).**

**Do not use a dosing device/ball when carrying out a washing & drying programme.**

1. Load the laundry and add detergent and fabric softener.
2. Switch the machine on by turning the selector dial to the selected wash programme/fabric.
3. Select the drying time by pressing button **5**. The display shows the entire duration of the washing and the selected drying cycle.
4. Select the required options by means of the relevant buttons. If possible, do not select a spin speed lower than that proposed by the appliance to avoid a too long drying time so saving energy. In any case the reduction of the spin speed is only possible after selecting drying.
5. Start the programme by pressing button **8**. After the programme has started, the time remaining on the display is updated every minute.
6. At the end of the programme the buzzer sounds. A flashing zero «0» appear on the display. At this point of the programme, starts an anti-crease phase which lasts about 10 minutes. During this time the door is locked and the display keeps showing the flashing

zero «D». (If you wish to open the door before or during the anti-crease phase, please follow the instructions given in the previous chapter).

6. Turn the selector dial to the «O» position to switch the machine off. Remove the laundry.

## Time Drying table

Degree of drying	Type of fabric	Max load	Spin Speed	Suggested drying time in mins
<b>Suitable for items to put away without ironing</b>	<b>Cotton and linen</b> (bathrobes, bath towels, etc)	4 kg	<b>1200</b>	170 - 190
		3 kg	<b>1200</b>	110 - 120
		1.5 kg	<b>1200</b>	75 - 85
	<b>Synthetics and mixed fabrics</b>	2 kg	<b>900</b>	100 - 110
		1 kg	<b>900</b>	60 - 70
<b>Suitable for ironing</b>	<b>Cotton and linen</b> (sheets, tablecloths, shirts, etc.)	4 kg	<b>1200</b>	140 - 160
		3 kg	<b>1200</b>	90 - 100
		1.5 kg	<b>1200</b>	60 - 70

**In compliance with EC directive EN 50229** the cotton reference programme for the data entered in the Energy Label must be tested dividing the maximum washing load by two equal parts and drying with DRYING TIME each of them.

**Note!** The different type of cottons (towelling, sheets, shirts, and so on) or eventual laundry rolling up during spinning phase may cause a not uniform dryness. So, in the exceptional case that at the end of the cycle the laundry remains slightly wet, we suggest you to stretch the items rolled up out, to redistribute evenly the laundry in the drum and to select an additional drying cycle of 20-30 minutes.

## Care and cleaning

### IMPORTANT!

You must **DISCONNECT** the appliance from the electricity supply, before you can carry out any cleaning or maintenance work.

### Descaling

The water we use normally contains lime. It is a good idea to periodically use a water softening powder in the machine. Do this separately from any laundry washing, and according to the softening powder manufacturer's instructions. This will help to prevent the formation of lime deposits.

### Maintenance Wash

With the use of low temperature washes it is possible to get a build up of residues inside the drum.

We recommend that a maintenance wash be performed on a regular basis.

To run a maintenance wash:

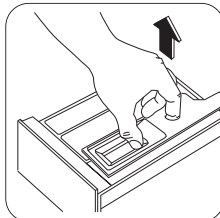
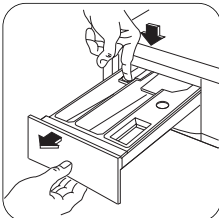
- The drum should be empty of laundry.
- Select the hottest cotton wash programme.
- Use a normal measure of detergent, must be a powder with biological properties.

### External cleaning

Clean the exterior cabinet of the appliance with soap and water only, and then dry thoroughly.

### Cleaning the dispenser drawer

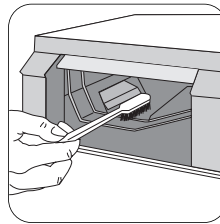
The washing powder and additive dispenser drawer should be cleaned regularly.



To aid cleaning, the top part of the additive compartment should be removed.

Remove the drawer by pressing the catch downwards and by pulling it out. Flush it out under a tap, to remove any traces of accumulated powder.

### Cleaning the drawer recess



Having removed the drawer, use a small brush to clean the recess, ensuring that all washing powder residue is removed from the upper and lower

part of the recess.

Replace the drawer and run the rinse programme without any clothes in the drum.

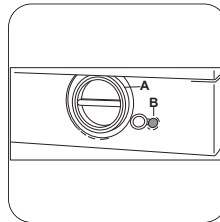
### Cleaning the pump

The pump should be inspected if

- the machine does not empty and/or spin
- the machine makes an unusual noise during draining due to objects such as safety pins, coins etc. blocking the pump.

Proceed as follows:

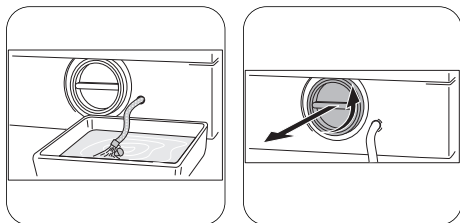
- Disconnect the appliance.
- If necessary wait until the water has cooled down.



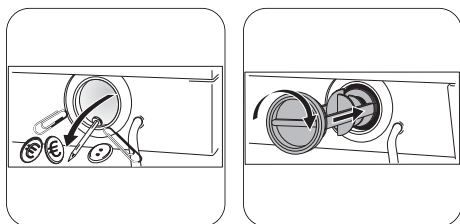
• Place a container close to the pump (A) to collect any spillage.

• Pull out the emergency emptying hose (B), place it in the container and remove its cap.

- When no more water comes out, unscrew the pump cover and remove it. Always keep a rag nearby to dry up spillage of water when removing the cover.



- Remove any objects from the pump impeller by rotating it.
- Put the cap back on the emergency emptying hose and place the latter back in its seat.



- Screw the pump cover fully in.

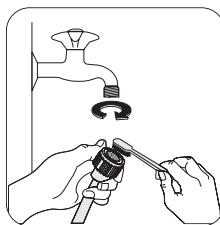
### **IMPORTANT!**

When the appliance is in use and depending on the programme selected there can be hot water in the pump.

Never remove the pump cover during a wash cycle, always wait until the appliance has finished the cycle, and is empty. When replacing the cover, ensure it is securely retightened so as to stop leaks and young children being able to remove it.

### **Cleaning the water inlet filter**

If your water is very hard or contains traces of lime deposit, the water inlet filter may become clogged. It is therefore a good idea to clean it from time to time.



Turn off the water tap. Unscrew the water inlet hose. Clean the filter using a hard bristle brush. Tighten up the inlet hose.

### **The dangers of freezing**

If the machine is exposed to temperatures below 0°C, certain precautions should be taken.

- Turn off the water tap.
- Unscrew the inlet hose.
- Place the end of the emergency emptying hose and that of the inlet hose in a bowl placed on the floor and let water drain out.
- Screw the water inlet hose back on and reposition the emergency emptying hose after having put the cap on again.
- When you intend to start the machine up again, make sure that the room temperature is above 0°C.

### **Emergency emptying out**

If the water is not discharged, proceed as follows to empty out the machine:

- pull out the plug from the power socket;
- close the water tap;
- if necessary, wait until the water has cooled down;
- place a bowl on the floor and place the end of the emergency emptying hose into the bowl. Remove its cap. The water should drain by gravity into the bowl. When the bowl is full, put the cap back on the hose. Empty the bowl. Repeat the procedure until water stops flowing out;
- clean the pump if necessary as previously described;
- replace the emergency emptying hose in its seat after having plugged it;
- screw the pump cover again.

## What to do if...

### IMPORTANT!

Certain problems are due to lack of simple maintenance or oversights, which can be solved easily without calling out an engineer. Before contacting your local Service Centre, please carry out the checks listed below.

During machine operation it is possible that the **red** pilot light of button **8** flashes, a few acoustic signals sound and one of the following alarm codes appears on the display to indicate that the machine is not working:

- *E10*: problem with the water supply
- *E20*: problem with water draining
- *E40*: door open.

Once the problem has been eliminated, press the button **8** to restart the programme. If after all checks, the problem persists, contact your local Service Centre.

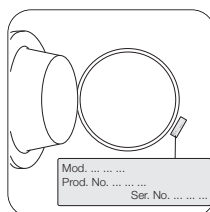
Malfunction	Possible Cause / Solution
<p><b>The machine does not start:</b></p>	<p>The door has not been closed. <i>E40</i></p> <ul style="list-style-type: none"> <li>• Close the door firmly.</li> </ul> <p>The plug is not properly inserted in the power socket.</p> <ul style="list-style-type: none"> <li>• Insert the plug into the power socket.</li> </ul> <p>There is no power at the socket.</p> <ul style="list-style-type: none"> <li>• Please check your domestic electrical installation.</li> </ul> <p>The main fuse or the fuse in the plug blown.</p> <ul style="list-style-type: none"> <li>• Replace the fuse.</li> </ul> <p>The selector dial is not correctly positioned and the button <b>8</b> has not been depressed.</p> <ul style="list-style-type: none"> <li>• Please turn the selector dial and press the button <b>8</b> again.</li> </ul> <p>The button <b>10</b> has been selected.</p> <ul style="list-style-type: none"> <li>• If the laundry are to be washed immediately, cancel the delay start</li> </ul> <p>The Child Safety Lock has been activated.</p> <ul style="list-style-type: none"> <li>• Deactivate this function.</li> </ul>
<p><b>The machine does not fill:</b></p>	<p>The water tap is closed. <i>E10</i></p> <ul style="list-style-type: none"> <li>• Open the water tap.</li> </ul> <p>The inlet hose is squashed or kinked. <i>E10</i></p> <ul style="list-style-type: none"> <li>• Check the inlet hose connection.</li> </ul> <p>The filter in the inlet hose is blocked. <i>E10</i></p> <ul style="list-style-type: none"> <li>• Clean the water inlet hose filter.</li> </ul> <p>The door is not properly closed. <i>E40</i></p> <ul style="list-style-type: none"> <li>• Close the door firmly.</li> </ul>

Malfunction	Possible Cause / Solution
<b>The machine fills then empties immediately:</b>	<p>The end of the drain hose is too low.</p> <ul style="list-style-type: none"> <li>• Refer to relevant paragraph in «water drainage» section.</li> </ul>
<b>The machine does not empty and/or does not spin:</b>	<p>The drain hose is squashed or kinked. <i>E20</i>)</p> <ul style="list-style-type: none"> <li>• Check the drain hose connection.</li> </ul> <p>The drain pump is clogged. <i>E20</i></p> <ul style="list-style-type: none"> <li>• Clean the drain pump.</li> </ul> <p>The option «Rinse hold» has been selected.</p> <ul style="list-style-type: none"> <li>• Select the draining or spinning programme</li> </ul> <p>The laundry is not evenly distributed in the drum.</p> <ul style="list-style-type: none"> <li>• Redistribute the laundry.</li> </ul>
<b>There is water on the floor:</b>	<p>Too much detergent or unsuitable detergent (creates too much foam) has been used.</p> <ul style="list-style-type: none"> <li>• Reduce the detergent quantity or use another one.</li> </ul> <p>Check whether there are any leaks from one of the inlet hose fittings. It is not always easy to see this as the water runs down the hose; check to see if it is damp.</p> <ul style="list-style-type: none"> <li>• Check the water inlet hose connection.</li> </ul> <p>The inlet or the drain hose is damaged.</p> <ul style="list-style-type: none"> <li>• Replace it with a new one.</li> </ul> <p>The cap on the emergency emptying hose has not been replaced after cleaning the pump.</p> <ul style="list-style-type: none"> <li>• Refit the cap on the emergency emptying hose and place the latter back in its seat.</li> </ul>
<b>Unsatisfactory washing results:</b>	<p>Too little detergent or unsuitable detergent has been used.</p> <ul style="list-style-type: none"> <li>• Increase the detergent quantity or use another one.</li> </ul> <p>Stubborn stains have not been treated prior to washing.</p> <ul style="list-style-type: none"> <li>• Use commercial products to treat the stubborn stains.</li> </ul> <p>The correct temperature was not selected.</p> <ul style="list-style-type: none"> <li>• Check if you have selected the correct temperature.</li> </ul> <p>Excessive laundry load.</p> <ul style="list-style-type: none"> <li>• Introduce into the drum less laundry.</li> </ul>

Malfunction	Possible Cause / Solution
<p><b>The door will not open:</b></p>	<p>The programme is still running.</p> <ul style="list-style-type: none"> <li>• Wait the end of washing cycle.</li> </ul> <p>The door lock has not been released.</p> <ul style="list-style-type: none"> <li>• Wait until the pilot light <b>9</b> has gone out.</li> </ul> <p>There is water in the drum.</p> <ul style="list-style-type: none"> <li>• Select drain or spin programme to empty out the water.</li> </ul>
<p><b>The machine vibrates or is noisy:</b></p>	<p>The transit bolts and packing have not been removed.</p> <ul style="list-style-type: none"> <li>• Check the correct installation of the appliance.</li> </ul> <p>The support feet have not been adjusted.</p> <ul style="list-style-type: none"> <li>• Check the correct levelling of the appliance.</li> </ul> <p>The laundry is not evenly distributed in the drum.</p> <ul style="list-style-type: none"> <li>• Redistribute the laundry.</li> </ul> <p>Maybe there is very little laundry in the drum.</p> <ul style="list-style-type: none"> <li>• Load more laundry.</li> </ul>
<p><b>Spinning starts late or the machine does not spin:</b></p>	<p>The electronic unbalance detection device has cut in because the laundry is not evenly distributed in the drum. The laundry is redistributed by reverse rotation of the drum. This may happen several times before the unbalance disappears and normal spinning can resume. If, after 10 minutes, the laundry is still not evenly distributed in the drum, the machine will not spin. In this case, redistribute the load manually and select the spin programme.</p> <ul style="list-style-type: none"> <li>• Redistribute the laundry.</li> </ul> <p>The load is too small.</p> <ul style="list-style-type: none"> <li>• Add more items, redistribute the load manually and then select the spinning programme.</li> </ul>
<p><b>The machine makes an unusual noise:</b></p>	<p>The machine is fitted with a type of motor which makes an unusual noise compared with other traditional motors. This new motor ensures a softer start and more even distribution of the laundry in the drum when spinning, as well as increased stability of the machine.</p>
<p><b>No water is visible in the drum:</b></p>	<p>Machines based on modern technology operate very economically using very little water without affecting performance.</p>

Malfunction	Possible Cause / Solution
<b>The machine does not dry or does not dry properly:</b>	<p>The drying time has not been selected.</p> <ul style="list-style-type: none"> <li>• Select the drying time.</li> </ul> <p>The water tap is not turned on <i>E10</i>.</p> <ul style="list-style-type: none"> <li>• Open the water tap.</li> </ul> <p>The drain filter is clogged <i>E20</i>.</p> <ul style="list-style-type: none"> <li>• Clean the drain filter.</li> </ul> <p>The machine is overloaded.</p> <ul style="list-style-type: none"> <li>• Reduce the laundry load.</li> </ul> <p>The selected drying time was not suitable for the laundry.</p> <ul style="list-style-type: none"> <li>• Select the suitable drying time for the laundry.</li> </ul>

If you are unable to identify or solve the problem, contact our service centre. Before telephoning, make a note of the model, serial number and purchase date of your machine: the Service Centre will require this information.



## Technical data

Dimensions	Width	60 cm
	Height	82 cm
	Depth (including the porthole)	54 cm
Electrical connection Voltage - Overall power - Fuse	Information on the electrical connection is given on the rating plate on the inner edge of the appliance door	
Water supply pressure	Minimum	0,05 MPa
	Maximum	0,8 MPa
Maximum Load	Cotton	6 kg
Maximum Dry Load	Cotton	3 kg
	Cotton Big Capacity	4 kg
	Synthetics	2 kg
Spin Speed	Maximum	1200 rpm



## Consumption values

Programme	Programme duration	Energy consumption (in kWh)	Water consumption (in litres)
Cotton 90°C	For the duration of the programmes, please refer to the display on the control panel	2.1	57
Cotton 60°C		1.2	53
Cotton 60°+ Economy selected		1.02	42
Synthetics 60°C		0.9	44
Delicates 40°C		0.55	56
Handwash 40°		0.45	58
Wool 40°		0.45	58

### Information

The consumption data shown on this chart is to be considered purely indicative, as it may vary depending on the quantity and type of laundry, on the inlet water temperature and on the ambient temperature. It refers to the highest

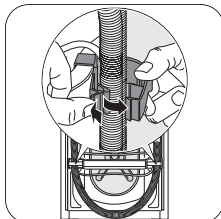
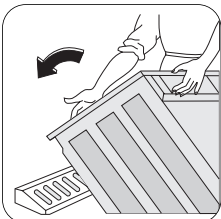
temperature for each wash programme.

(\*) The «Cotton» 60° + the option Economy selected with a load of 6 kg is the reference programme for the data entered in the energy label, in compliance with EEC 92/75 standards.

## Installation instruction

### Unpacking

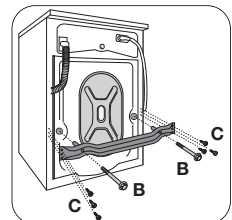
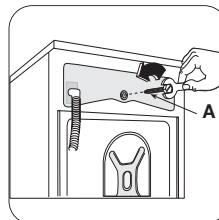
All transit bolts and packing must be removed before using the appliance. You are advised to keep all transit devices so that they can be refitted if the machine ever has to be transported again.



1. After removing all the packaging, carefully

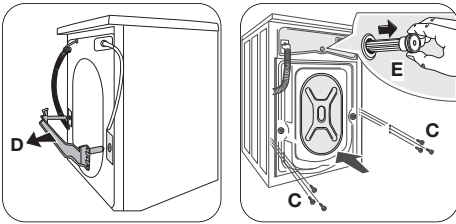
lay machine on it's back to remove the polystyrene base from the bottom.

2. Remove the power supply cable and the draining hose and inlet hose from the hose holders on the rear of the appliance.

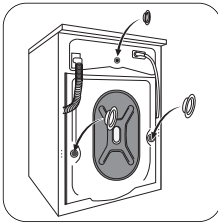


3. With a suitable spanner unscrew and remove the central rear bolt A.

4. Unscrew and remove the two large rear bolts **B** and the six smaller bolts **C**.

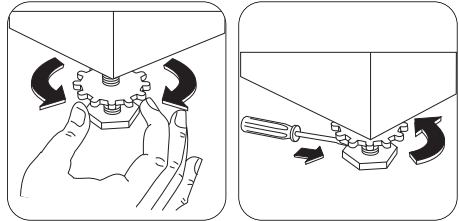


5. Remove the bracket **D**, refit the six smaller bolts **C** and slide out the relevant plastic spacer **E**.



6. Fill the smaller upper hole and the two large ones with the corresponding plastic plug caps supplied in the bag containing the instruction booklet.

in the event of a breakdown. Carefully level by screwing the adjustable feet in or out.



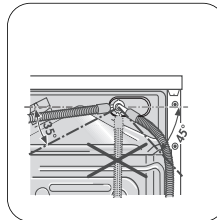
Never place cardboard, wood or similar materials under the machine to compensate for any unevenness in the floor. After having levelled the machine, tighten the lock nuts.

### Water inlet

The inlet hose is already hanged on the rear of the machine. leaks.

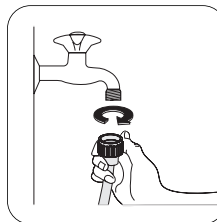
**Do not use the hose from your previous machine to connect to the water supply.**

1. Set the hose correctly by loosening the ring nut. After positioning the inlet hose, be sure to tighten the ring nut again to prevent leaks.



**Attention!**

**Do not place the inlet hose downwards. Angle the hose to the left or right depending on the position of your water tap.**



2. Connect the hose to a cold water tap with a 3/4" thread. The inlet hose must not be lengthened. If it is too short and you do not wish to move the tap, you

will have to purchase a new, longer hose specially designed for this type of use

### Positioning

Install the machine on a flat hard floor. Make sure that air circulation around the machine is not impeded by carpets, rugs etc. Before placing it on small tiles, apply a rubber coating.

Never try to correct any unevenness in the floor by putting pieces of wood, cardboard or similar materials under the machine. If it is impossible to avoid positioning the machine next to a gas cooker or coal-burning stove, an insulating panel covered with aluminium foil on the side facing the cooker or stove, must be inserted between the two appliances.

The machine must not be installed in rooms where the temperature can drop below 0. The water inlet hose and the drain hose must not be kinked.

Please ensure that when the appliance is installed, it is easily accessible for the engineer

## NOTE

Installation should comply with local water authority and building regulations' requirements.

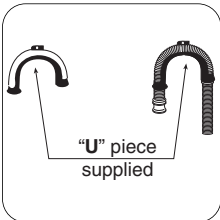
A minimum water pressure of 0.05 MPa (0.5 bar) is required for safe operation of the appliance. If you cannot make the cold water connection direct from the rising mains, you may be able to operate the appliance from your cold water storage system.

There should be a minimum vertical distance of 5.02m (16.5 ft) between the appliance's inlet and the bottom of the water storage tank.

## Water drainage

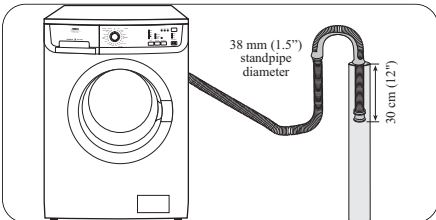
This appliance is designed to be permanently plumbed into your home's drainage system using one of the following methods.

### 1. Into a drainage standpipe.

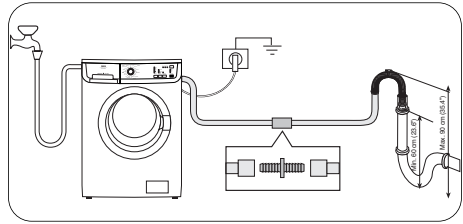


Firstly form a hook in the end of the drain hose using the «U» piece supplied.

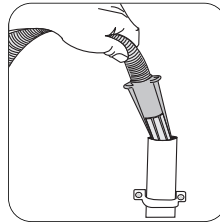
Place the drain hose into your standpipe, which should have an internal diameter of approximately 38mm thus ensuring there is an air break between the drain hose and standpipe.



When discharging into a standpipe ensure that the top of the standpipe is no more than 90 cm (35.4") and no less than 60 cm (23.6") above floor level.



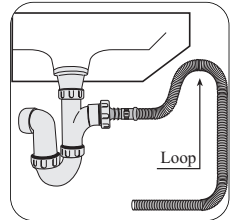
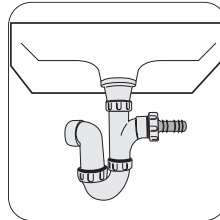
The drain hose may be extended to a maximum of 4 metres. An additional drain hose and joining piece is available from your local Service Force Centre. The joining piece must have an internal diameter of 18mm.



If your drain hose looks like this (see below) you do not require the «U» piece. Just push the hose firmly into the standpipe.

### 2. Onto a sink outlet spigot.

If the outlet spigot has not been used before, remove any blanking plug that may be in place.



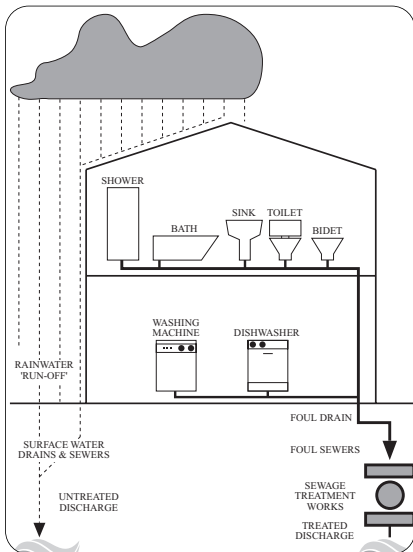
Push the drain hose onto the spigot and secure with a clip, ensure a loop is formed in the drain hose (see diagram) to prevent waste from the sink entering the washer-dryer.

## Important!

Before connecting the machine to new pipework or to pipework that has not been used for some time, run off a reasonable amount of water to flush out any debris that may have collected in the pipes.

## In the interest of the environment

Washer-dryers should be connected to the FOUL drainage system, the water will then be taken to a sewage works for treatment before being discharged safely into a river. It is essential that these appliances are not connected to the surface water drainage system as this water is discharged directly into a river or stream and may cause pollution. If you require any further advice please contact your local water authority.



## Electrical connection

Any electrical work required to install this appliance should be carried out by a qualified electrician or competent person.



### **WARNING!**

**This appliance must be earthed. The manufacturer declines any liability should this safety measure not be observed.**

Before switching on, make sure the electricity supply voltage is the same as that indicated on the appliance's rating plate.

## **IMPORTANT!**

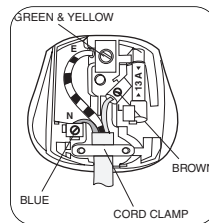
**Information on the electrical connection is given on the rating plate on the inner edge of the appliance door.**

The appliance is supplied with a 13amp plug fitted. In the event of having to change the fuse in the plug supplied, a 13amp ASTA approved (BS1363/A) fuse must be used.

Should the plug need to be replaced for any reason, proceed as described below.

The wires in the mains lead are coloured in accordance with the following code:

Green and Yellow ..... - Earth  
 Blue ..... - Neutral  
 Brown ..... - Live



The wire coloured green and yellow must be connected to the terminal marked with the letter «E» or by the earth symbol  $\equiv$  or

coloured green and yellow.

The wire coloured blue must be connected to the terminal marked «N» or coloured black.

The wire coloured brown must be connected to the terminal marked «L» or coloured red. Upon completion there must be no cut, or stray strands of wire present and the cord clamp must be secure over the outer sheath.



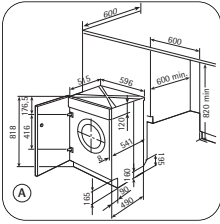
### **WARNING!**

**A cut off plug inserted into a 13 amp socket is a serious safety (shock) hazard. Ensure that the cut off plug is disposed of safely. Should the appliance power supply cable need to be replaced, this must be carried out by our Service Force Centre.**

The power supply cable must be easily accessible after installing the appliance.

## Building-in

This appliance has been designed to be built into the kitchen furniture. The recess should have the dimensions shown in picture **A**.

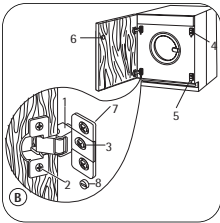


When installing the appliance into the kitchen furniture ensure, if possible, the hoses are placed in either of the two recesses on the back of the appliance. This

will help to prevent the hoses from becoming kinked or trapped.

## Preparation and assembly of the door

The machine is originally pre-arranged for the assembly of a door opening from right to left.



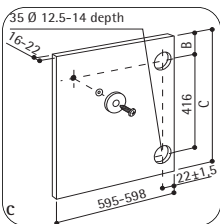
In this case it is sufficient to screw in the hinges (1) and the counter-magnet (6) provided with the appliance, at the right level (Fig. **B**).

### a) Door

The dimensions of the door should be:

- width 595-598 mm
- thickness 16-22 mm

The height (C-Fig. **C**) depends on the height of the adjacent furniture's base.



### b) Hinges

To mount the hinges it is necessary to drill two holes (dia. 35 mm, depth 12.5-14 mm depending on the depth of door furniture)

on the inner side of the door. The distance between the holes hobs fixing centres must be 416 mm.

The distance (B) from upper edge of the door to the centre of the hole depends on the adjacent furniture's dimensions.

The required dimensions are given in the picture **C**. The hinges will be fixed to the door by means of screws for wood (2-Fig. **B**) supplied with the appliance.

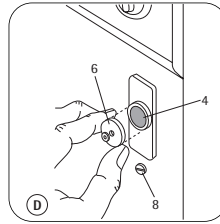
### c) Mounting the door

Fix the hinges (1) to the machine by means of the M 5x15 screws (3-Fig. **B**). The hinges can be adjusted to compensate for possible uneven thickness of the door.

To align the door perfectly it is necessary to loosen the screw (3-Fig. **B**), adjust the door and tighten the screw again.

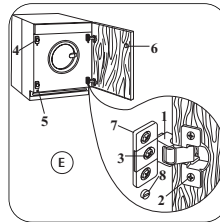
### d) Counter-magnet (6)

The appliance is pre-arranged for a magnetic closure of the door. To enable a correct operation of this device, it is necessary to screw the counter-magnet (6) (steel disk + rubber ring) into the inner side of the door.



Its position must correspond to the magnet (4) on the appliance (see picture **D**). If the door has to be opened from left to right, invert the position of the plates (7), the magnet

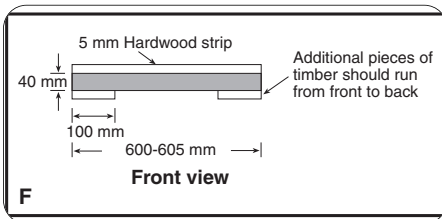
(4) and the plate (5) (Fig. **B** and **E**). Mount the counter-magnet (6) and the hinges (1) as previously described.



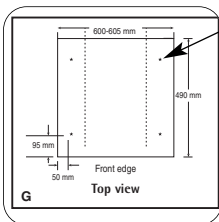
**Recommendations regarding the construction and fitting of a base when the installation requires an integrated appliance to be raised**

Where the appliance has been raised by mounting onto a wooden base provided by the installer.

The material used to construct the base should have a non slip surface, be water repellent and if possible be one solid piece. If it is not possible to use one solid piece, due to the additional height required, ensure that any additional strips of timber are glued and screwed to the underside of the base (see Fig. F).

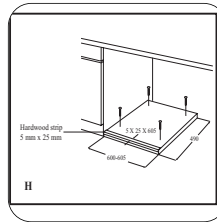


Drill four fixing holes see Fig. G.



Position the base into the recess with its front edge as far forward as the adjoining plinth line will allow.

The reason for placing the base in this position is to allow a small strip of beading to be fitted in front of the appliance feet.




Fix the base firmly to the floor using four appropriate counter-sunk screws (see Fig. H).

With the appliance installed adjust all four feet ensuring the machine is stable, and a clearance of approximately 5 mm is left between the top of the machine and the under side of the worktop.

## Environmental concerns

### Packaging materials

The materials marked with the symbol  are recyclable.

>PE<=polyethylene


>PS<=polystyrene

>PP<=polypropylene

This means that they can be recycled by disposing of them properly in appropriate collection containers.

### Old machine

Use authorised disposal sites for your old appliance. Help to keep your country tidy!

The symbol  on the product or on its packaging indicates that this product may not be treated as household waste. Instead it shall be handed over to the applicable collection point for the recycling of electrical and electronic equipment. By ensuring this product is disposed of correctly, you will help prevent potential negative consequences for the environment and human health, which could otherwise be caused by inappropriate waste handling of this product. For more detailed information about recycling of this product, please contact your local city office, your household waste disposal service or the shop where you purchased the product.

### Ecological hints

To save water, energy and to help protect the environment, we recommend that you follow these tips:

- Normally soiled laundry may be washed without prewashing in order to save detergent, water and time (the environment is protected too!).
- The machine works more economically if it is fully loaded.
- With adequate pre-treatment, stains and limited soiling can be removed; the laundry can then be washed at a lower temperature.
- Measure out detergent according to the water hardness, the degree of soiling and the quantity of laundry being washed.

[www.electrolux.com](http://www.electrolux.com)

[www.zanussi-electrolux.co.uk](http://www.zanussi-electrolux.co.uk)